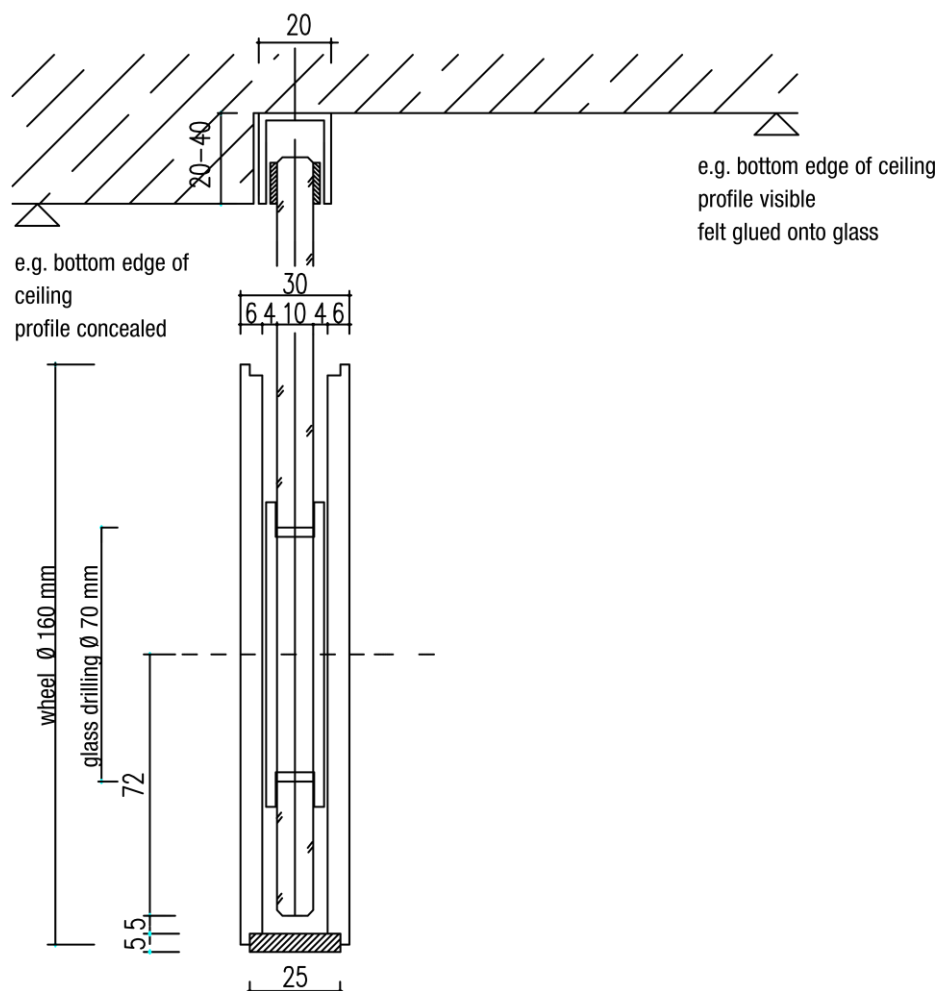


# technical drawings

## stainless steel roll fitting for sliding doors astec b.410

alu u-profile 20/40/2 mm  
anodized EV1



### art.no. 4.10.06

roller b.410  
diameter 160 mm

### art.no. 9.07.17

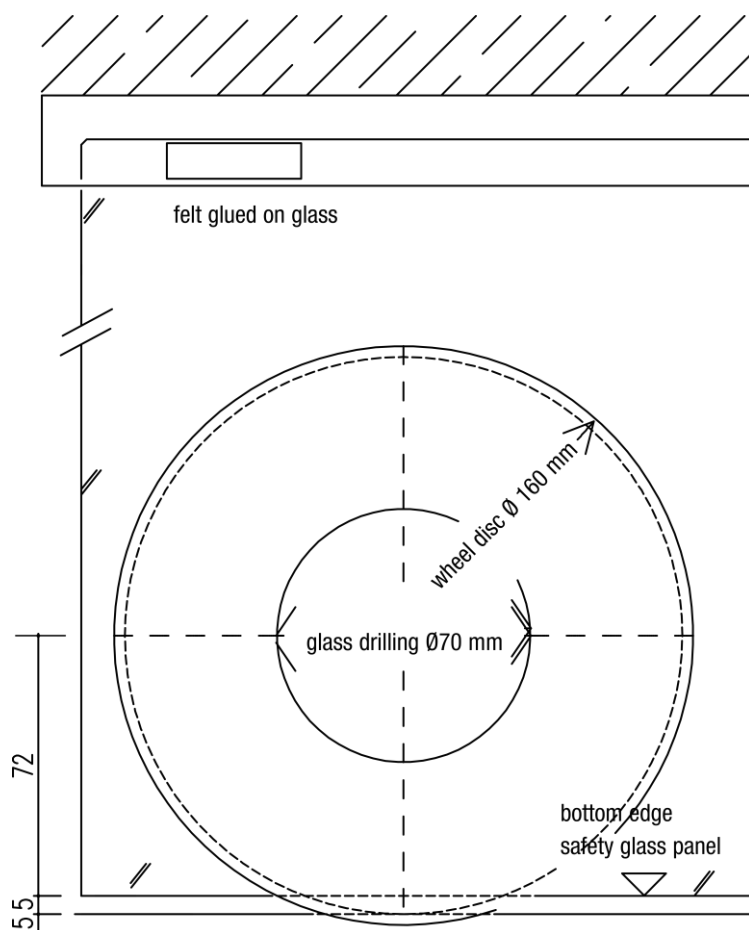
floor track stainless steel b.410  
undrilled, 25/5 mm

### art.no. 9.07.46

floor track stainless steel b.410  
drilled, 25/5 mm

# technical drawings

stainless steel roll fitting for sliding doors  
astec b.410



**art.no. 4.10.06**

roller b.410

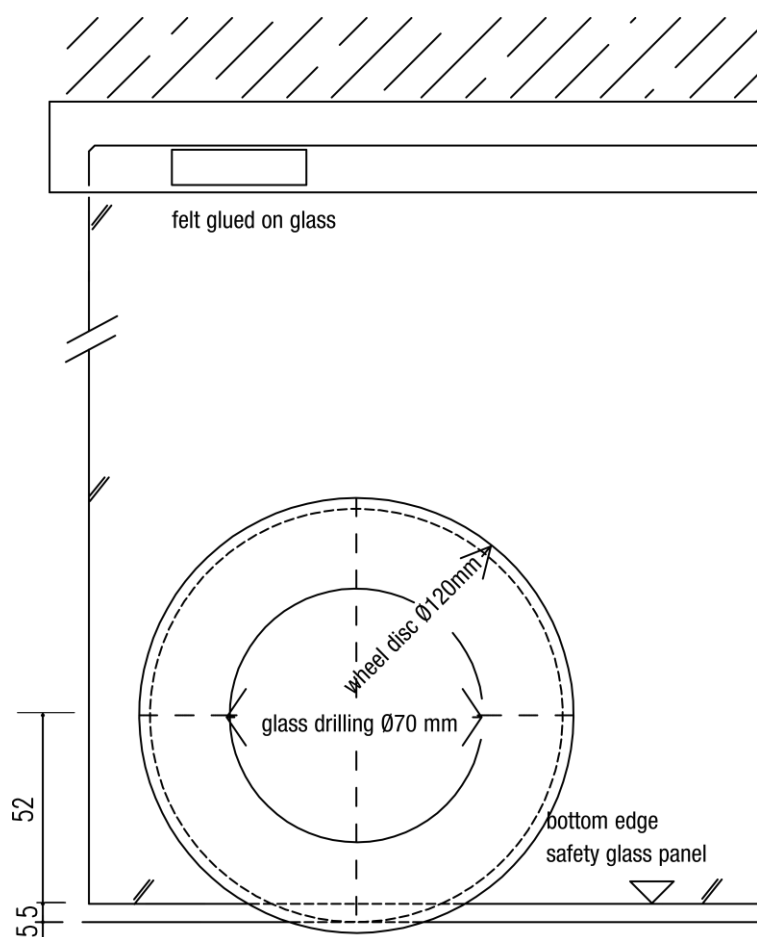
diameter 160 mm

2/6 – 10.2021



# technical drawings

stainless steel roll fitting for sliding doors  
astec b.410



**art.no. 4.10.07**

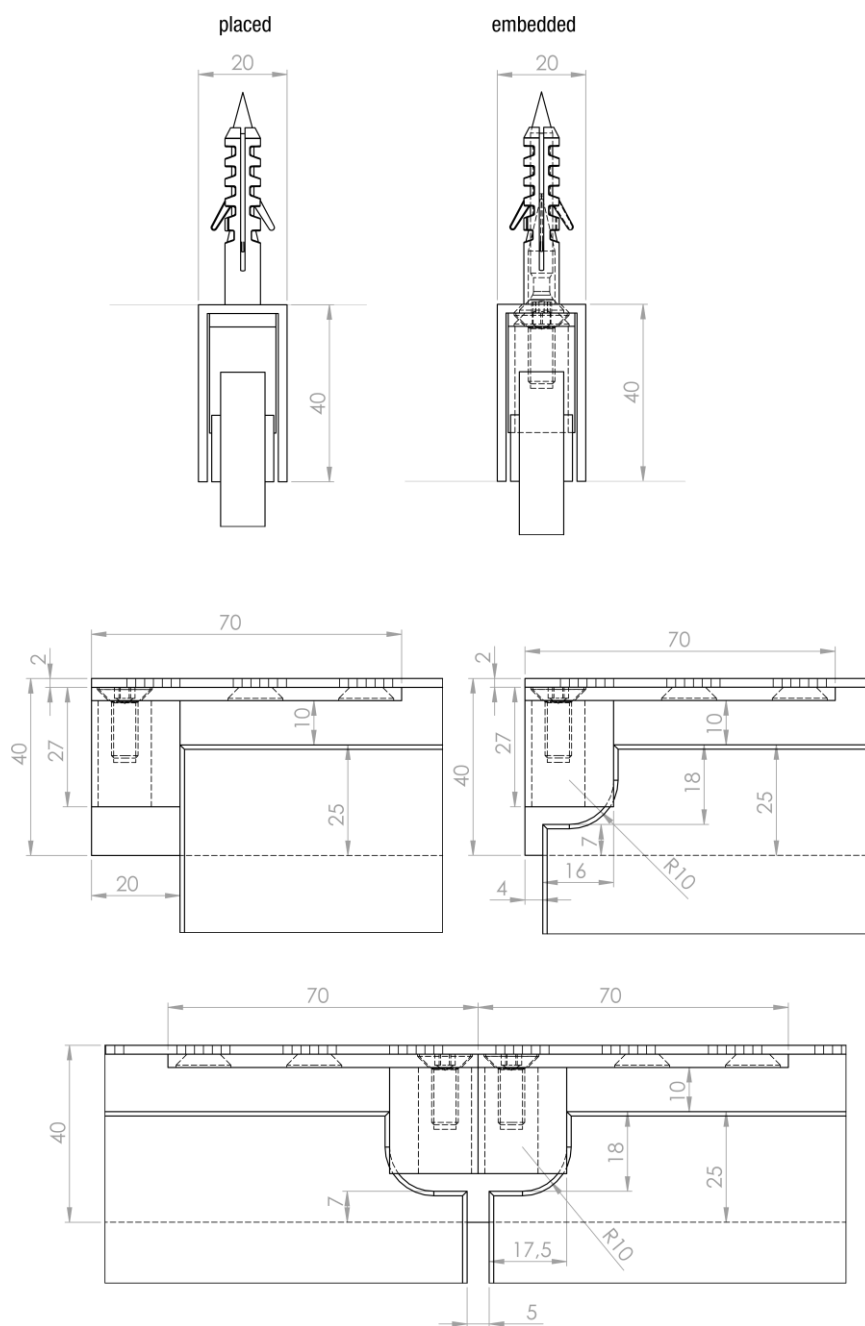
roller b.410

diameter 120 mm

4/6 – 10.2021

# technical drawings

stainless steel roll fitting for sliding doors  
astec b.410



ceiling rail 40/20 mm

**art.no. 9.08.01**

ceiling rail alu u-profile 40/20 mm

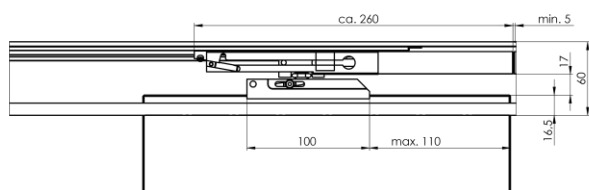
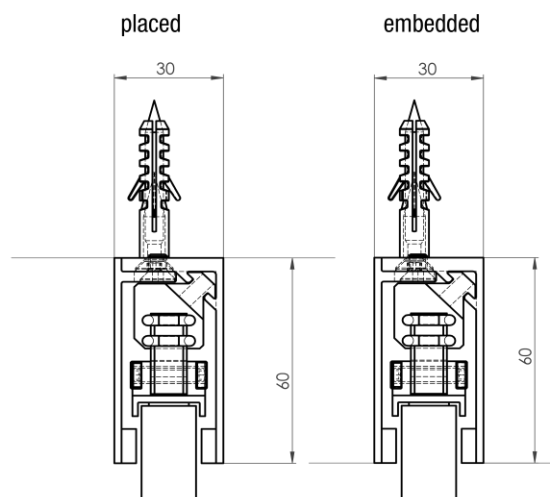
**art.no. 9.08.37**

end stop in alu u-profile 40/20 mm

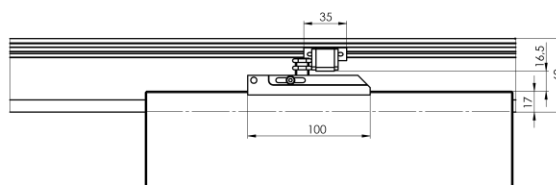
5/6 – 10.2021

# technical drawings

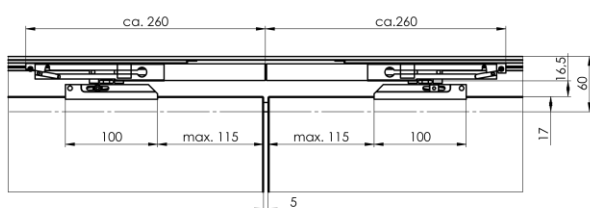
stainless steel roll fitting for sliding doors  
astec b.410



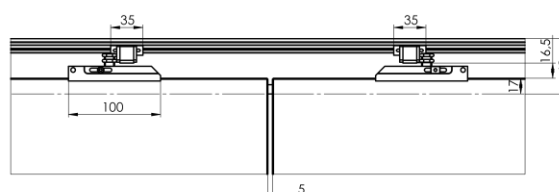
door damper single door



end stop single door



door damper double door



end stop double door

ceiling rail 60/30 mm

**art.no. 9.08.83**

two-piece ceiling rail in alu u-profile 60/30 mm

**art.no. 9.08.92**

set door damper in alu u-profile 60/30 mm

**art.no. 9.08.91**

set end stop in alu u-profile 60/30 mm

6/6 – 10.2021